

Avalanche Echoes

Alpine Club of Canada - Vancouver Section News



*Rob Brusse on Mt. Sir Donald
Photo by Jordy Shepard*

Next Meeting

Tuesday May 24, 2005 at 7:30 p.m.

Location: Floral Hall, Van Dusen Gardens W. 37th & Oak Street , Vancouver

Slide Show: "Mountain Music: Summer Camps and Other Adventures" by Kent Watson, featuring the Lake O'Hara and Rogers Pass camps.



THE AVALANCHE ECHOES is published nine times per year by the Alpine Club of Canada, Vancouver Section.

EDITORS:

Helen Habgood 604-984-6842
hhabgood@chartwell-consultants.com
Gerard Cheong 604-669-6556
gerard.cheong@shaw.ca

This newsletter is the official publication of the Alpine Club of Canada, Vancouver Section. It keeps members informed on topics of interest to mountaineers including activities within the club, equipment, techniques, access, and environmental issues.

The club meets monthly, usually for a slide presentation, at the Floral Hall in Van Dusen Gardens, W 37th and Oak St., at 7:30 pm on the fourth Tuesday of the month, except in July, August and December.

ANNUAL MEMBERSHIP DUES

Vancouver Section:
Single \$61.00
Family \$81.00
Junior \$34.00 (under 18)

For membership dues, renewals, and changes of address, and booking huts, contact the ACC national office directly:

P.O. Box 8040 Canmore, AB, T1W 2T8, fax 403-678-3224, phone 403-678-3200, or e-mail: alpclub@telusplanet.net, or visit www.alpineclubofcanada.ca

Section Website: www.aebc.com/acc

For detailed membership form including upgrades, send SASE to:

ACC-Vancouver, c/o FMCBC, P.O. Box 19673, Vancouver, BC V5T 4E3; ph: 604-873-6096.

SUBMISSIONS

We encourage submissions of writing, photography, drawings, etc.. If possible, articles should be submitted by e-mail (about 500 words). Photos and slides are always needed (JPG format is preferable). Deadline for submissions is the last day of the previous month.

ADVERTISING

Advertising in the Avalanche Echoes shall be accepted at the discretion of the Editor. All advertising shall be for products or services of direct interest to our membership.

EDITORIAL POLICY

Suitability for publication is at the editor's discretion within the guidelines of the Section Executive. Articles may be edited for clarity or to fit the available space.

ACKNOWLEDGEMENTS

Thanks to Chartwell Consultants Ltd. for use of computer space and printers.

Alpine Club Executive

Chair	Tony Knight	604-873-2276
Secretary	Rand Chaterjee	
Treasurer	Rob Brusse	604-224-0747
Membership (Voice mail)	vacant	604-878-5272
Editors	Helen Habgood	604-984-6842
	Gerard Cheong	604-669-6556
Climbing Coordinators	Ian McGillivray	604-988-3618
	Mike Thompson	604-534-8863
Camps Coord.	Richard Keltie	604-738-4583
Skills Development	Susan Baldwin	604-872-4562
Socials	vacant	
Programs	Susan Higginbottom	604-925-3742
Access & Environment	Henny Coates	604-732-4613
National Rep.	Fern Hietkamp	604-872-4290
Promotions	Jay MacArthur	604-987-1232
FMCBC Rep.	Richard Keltie	604-738-4583
Special Project Volunteers:		
Program Assistant	Linda Bily	604-222-1577
Skills Assistant	Zoran Vasic	604-438-9066
Jim Haberl Hut	Liz Scremin	604-921-2651
Sea to Sky Forums	Mary Henderson	604-905-9151
VOC Rep	Antje Wahl	604-739-6057
Archivist	Irene Goldstone	604-689-8737
Quartermaster	Rob Brusse	604-224-0747
Tantalus Hut	Ron Royston	604-687-2711
Webmaster	Gerard Cheong	604-669-6556
Email Administrator	Richard Keltie	604-738-4583
	accvanem@telus.net	

Announcements

ACC National Awards

We are pleased to announce that five Vancouver Section members have been awarded the following club's National awards:

Fern Hietkamp - Distinguished Service Award for lengthy contributions at the Vancouver Section and National level including organizing the ACC National AGM 2002 in Vancouver, representing the Section at the National Board for five years, work on the ACC Centennial Committee and many contributions to organizing and leading Section events and activities.

Colin Boyd - Don Forest Service Award, for his contribution in the design and construction of the new Jim Haberl Hut.

Peter Taylor - Don Forest Service Award, for his contribution in the design and construction of the new Jim Haberl Hut.

Ian Bruce for the Don Forest Service Award, for his initiative and leadership of the 'Melting Mountains' campaign to raise awareness of climate change.

Margaret Hanson for the Leader Award for her leadership and organization of mountaineering and climbing trips.

Congratulations and thanks to all for their achievements! The awards will be presented at the May social.

Letter From The Chair

Huts and “Roofed Accommodations” in Parks?

by Tony Knight

Where does the ACC Vancouver Section stand on “Huts in Parks”? And what should we do about the questions of development of access and facilities in our wilderness areas? And what sort of conservation values do we wish to maintain? Liz Scremin wrote last fall in “The Precarious Middle Ground” in the *Avalanche Echoes* that the Club seeks to find a balance on these questions. The question came in relation to one group’s idea to propose a gondola into the Tantalus range; and more recently, it has come up regarding lodges in BC Provincial parks. While the BC government policy on “roofed accommodation” in provincial parks has still not been released, this is an important time for us to think about what direction we should take. Considering that our Section operates one hut at Lake Lovelywater in Tantalus Provincial Park, and is now building the new Jim Haberl Hut in the same area, the question is of some relevance.

As previously mentioned in the March edition of the *Echoes*, ACC National has been involved with BC Parks and the BC Ministry of Water Land and Air Protection in two ways regarding facilities in parks. Following the initial announcement back in 2003, the ACC was invited by the BC government to participate in an advisory group to develop policy regarding lodges in BC Parks. As well, the ACC submitted a draft proposal late last year to build a new hut in Mt. Robson Provincial Park. The Mt. Robson hut idea originated at an ACC National Board Meeting in 2002 when it was decided to pursue a new location for a hut to celebrate the upcoming ACC centennial in 2006. The concept and design of the hut was based on the ACC’s commitment to reduce the impact of human recreation in a popular Mt. Robson alpine area. The Prince George ACC Section, which is closest to the area, supported the proposal.

Earlier this year, a portion of the Province of BC’s draft policy on “roofed accommodation” gained media attention, along with some “expressions of interest” from industry about potential projects. The list of projects included mention of the ACC’s Mt. Robson hut proposal and indication that Intrawest is interested in building one or more lodges on the popular Spearheads traverse route in Garibaldi Provincial Park, adjacent to the Whistler Blackcomb ski area. At this point, the BC government has not confirmed the details nor approved any proposals. And we believe that before any of these proposals are considered further, the “roofed accommodation” policy has to be finalized and implemented. However, the mere interest in the development of huts in the SW Coast mountains raises the issue for our Section of the ACC.

Recently, the ACC Vancouver Section executive discussed with ACC National executive members what the ACC position is regarding new “roofed accommodations” in Parks, and what we ought to do at the Section level for parks and alpine areas in our region. While the ACC nationally has not articulated and approved any final policy, one thing we are all agreed on, that if any new “roofed accommodations” are permitted, we would favour those in the style of the backcountry huts now built and being maintained by the ACC. Nationally, the ACC owns or operates 23 huts,

with several in National and Provincial Parks. We feel the examples of the ACC Bow and Balfour huts on the popular Wapta traverse, and the Section huts such as the Tantalus Lake Lovelywater hut, the Wendy Thompson hut operated by the Whistler Section, and the new Jim Haberl Hut are the models to follow. For popular areas, huts provide a focus for human activity and a way to manage waste. Many of the ACC backcountry huts use a barrel fly-out system for human waste. We also favour backcountry huts in the traditional self-service style that provide shelter, bunks and cooking facilities, and not full-service hotel style lodging.

Garibaldi Provincial Park, and the Spearheads range in particular, already withstand heavy backcountry recreational use. For many of us who have done the Spearhead Traverse, the experience is highly rewarding. But I’ve also had the unpleasant experience of coming upon the waste of others. Finding a place to camp that is clean and has minimal impact on the environment is highly desirable. One step would be to build outhouses and have designated camping areas. But it seems inevitable in heavily used areas that huts will be the way to go.

If the provincial official “roofed accommodation” policy is ever implemented, we believe that it will include a review process that is open and fair to everyone involved. It is expected that if any policy comes out, the government will issue a “request for proposals”. As well, the policy should include guidelines for appropriate facilities that are sensitive to protecting the environment. The ACC has maintained a long, good-standing relationship with National and Provincial Parks on huts and how they are operated. Similarly, the Vancouver Section has worked well with regional Parks managers regarding our Tantalus hut operations and maintenance, and we expect this to continue with any new policies announced. It is not at all certain what will happen as we head into a provincial election this month of May. By the time you read this, the political landscape may have changed. The government policy on lodges in parks may—or may not—be completed.

Whether or not the Province’s parks lodge policy comes out, now is the time to make our views known, provide our vision for what we want to see in the future, and help to shape it. The ACC Vancouver Section needs to consider what resources we have and what role we should take in the possible development of huts and facilities in Parks? Should we propose or support hut development in Garibaldi Provincial Park? What about any park? Do we have the will and resources to carry out another hut project? And what should our response be to proposals from industry? If we don’t get involved, are we resigned to let commercial recreational interests determine the future of our experience in the backcountry?

Let us know what you think about huts in the backcountry, on the Spearhead traverse, in Garibaldi Park, etc. Recreation development or conservation, what do you want our Parks to look like in the future? Think about it, and let us know what we should look at and make happen for the future for backcountry recreation and mountain environment experience in BC.



CASCADE ENVIRONMENTAL RESOURCE GROUP LTD.

MEMORANDUM

DATE: April 13, 2005
TO: Alpine Club of Canada
CC: Tyler Freed
FROM: Jonathan Turner, B.I.T., Dave Williamson, Principal.
RE: Commercial Recreation Tenure Application
FILE #: 076-01-10

To whom it may concern,

Cascade Environmental Resource Group Ltd. (CERG) is assisting Coast Range Heliskiing prepare their tenure application for Heli-skiing and Heli-hiking for submission to Land and Water British Columbia Inc. For this we need to identify potential conflicting cultural issues, land uses, and environmental issues associated with their operations. The attached map highlights the proposed area of tenure Northeast of Pemberton.

CERG is gathering information regarding public recreation interests that may be pertinent to the highlighted areas. It would be much appreciated if you could contact us with any concerns or comments regarding impacts of motorized recreational use in the proposed area. Upon request a hardcopy of this information package can be provided.

Thanking you in advance,

Jonathan Turner

CASCADE ENVIRONMENTAL RESOURCE GROUP LTD.

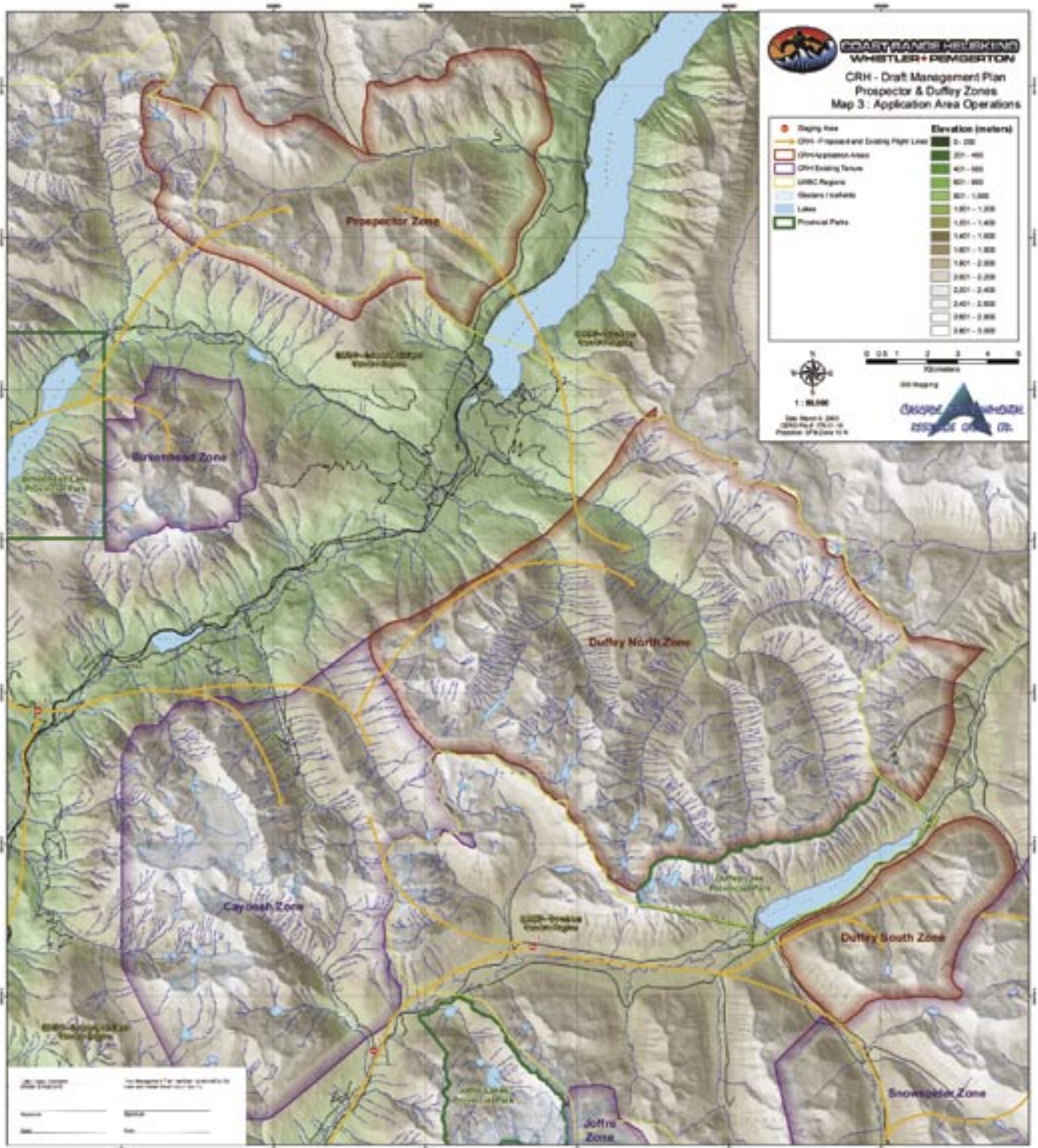
WHISTLER OFFICE

#3 - 1005 Alpha Lake Road,
WHISTLER BC V0N 1B1
PHONE (604) 938-1949 FAX (604) 938-1247

SQUAMISH OFFICE

P.O. Box 1043, 2135 Ridgeway Crescent
GARIBALDI HIGHLANDS, BC V0N 1T0
PHONE (604) 898-9859 FAX (604)

Reports



Reports

Date: April 16, 2005

To: Land & Water BC

Re: Application #2408333 – Coast Range Heliskiing Ltd. – Helicopter staging area near Joffre Creek.

The Alpine Club of Canada Vancouver Section represents over 450 members in the Lower Mainland who principally engage in non-motorized backcountry skiing and mountaineering. One the chief areas of backcountry skiing is the area surrounding the Duffey Lake corridor. We are concerned that this application for a helicopter staging area, and the resulting increase in aircraft activity would compromise the backcountry skiing experience of our membership and the public that engage in backcountry skiing in this area. I have spoken with a representative of the applicant; they have indicated their wish to minimize any conflicts with non-motorized backcountry users, for example, through communications before and during operations. The applicant also indicated they would avoid flying over popular areas of backcountry use. Therefore we would ask that this application for the staging area on the Joffre North FSR be subject to the conditions that (a) operations avoid popular times of backcountry recreation (e.g. limit to weekdays), (b) a communications plan (e.g. contact names, phone numbers, radio frequencies, etc.) be made to avoid conflicts with groups planning or engaged in backcountry activities, and, (c) overflights be restricted from popular backcountry areas including Marriott Basin and surrounding mountains (Cayoosh Mtn, Mt Rohr, etc.), Joffre Lakes Provincial Park, Cerise Creek and mountains and areas in the Duffey Lake area identified for non-motorized use in the Sea-to-Sky Backcountry Sharing Forum.

Sincerely,

Tony Knight,

Chair, Alpine Club of Canada – Vancouver Section

Mountain Biking in BC's Grasslands

June 17, 2005 Thompson Rivers University – Kamloops, British Columbia.

British Columbia's grasslands are beautiful and easily accessible. They play host to endangered species, the ranching industry and recreationists from around the world. These competing, often conflicting, uses have lead to increased pressure on grassland ecosystems.

Join us to:

Share your experiences as a naturalist, rider, land manager, rancher or guide.

Participate in discussions with members of the mountain biking community and other interest groups.

Explore management concerns arising from increased mountain biking on grasslands and make a contribution to effective grassland management.

Be a part of the solution!

Registration for the 2005 Healthy Grasslands Symposium will begin on April 25, 2005. For more information please contact Sarah McNeil, Education and Outreach Coordinator with the GCC at 250-374-5787 or sarah.mcneil@bcgrasslands.org.



If you are interested in helping the GCC plan this event or in becoming a sponsor, please contact Sarah McNeil at 250-374-5787.



Grasslands Conservation Council of British Columbia
2005 Sustaining Healthy Grasslands Symposium

Announcements

Summer Snow Workshop Mt. Baker Area

Learn or refresh your summer mountaineering skills at this workshop to be held in the Mt. Baker area on the June 11. Training will be provided in walking on snow slopes, making snow anchors, using an ice axe for self arrest, glacier travel and carrying out crevasse rescue. Beginners and seasoned ACC mountaineers welcome. These skills are essential for everyone intending to go mountaineering this summer. Please contact Paul Baker for more information. Attendance is limited.

Date: June 11, 2005

Contact: Paul Baker at 604-929-7699

Squamish Roc Trip 2005

The Squamish Roc Trip 2005 will be on June 24–26th. A big community building event, competition, and fundraiser at Stawamus Chief Provincial Park, Cheakamus Canyon (Conroy Creek FSR - Chek), and of course in Squamish. The event's lead sponsors are Petzl and ArcTeryx, and net proceeds will be divided between the Access Society and a Squamish-area initiative that benefits the climbing community. The Roc Trip will include socials, competitions, entertainment, parties, clinics, and other fun. For more information, see the website, or www.petzl.com or www.arcteryx.com.

Other sponsors include Prana, EntrePrise, Climbing, New England Ropes, La Sportiva, Howe Sound Inn & Brewing Company (Brew Pub), Valhalla Pure Outfitters (Squamish), the Ministries of Forests and of Water, Land & Air Protection, District of Squamish, Squamish Rock Guides, the Edge Climbing Centre, On Sight Equipment, and more.

The Access Society needs a lot of volunteers to help organize and run the Roc Trip. If you can help, keep that weekend free, and contact squamish@access-society.ca.

Upcoming Adopt-a-crag

The Access Society is planning ten Adopt-a-Crag volunteer crag stewardship events in 2005, around B.C. A chance for everyone to put something into the places we cherish. All will involve refreshments, fun, some useful work, and maybe some draw prizes. (We have a grant from MEC for funding toward organization and materials expenses, but draw prizes welcome.) Some Adopt-a-Crags area coming up in the near future:

Powell River (May 7th & 8th)

Trail work and campsite maintenance at the Eldred River, and a chance to visit this fabled area with knowledgeable locals. Call Colin Dionne (604) 487-0487 or fjordcoast@shaw.ca

Skaha (May 19th)

Meet at the Braesyde parking lot at 4:00 PM each of these days. The first evening will involve building a new ramp for the composting toilet, and cleaning all the toilets. On the 19th, the group will work on the eroded trail on the south side of Windy Hill (White Slab/Peach Buttress), across from Plum Line. For more information, contact Janet Black (250) 497-5164 or janito@canada.com or Sheilagh Seaton (250) 494-0035 or sendit@shaw.ca

Section Camps/ Workshops

Tantalus Range Camp, Lake Lovelywater

A joint ACC Rocky Mountain Section - Vancouver Section Camp

The ACC Rocky Mountain Section (Canmore) has booked the Lake Lovelywater Hut for Aug. 13 - 20, and invites Vancouver Section members to join them for a week of climbing in the Tantalus Range (above Squamish). Come and join us for great climbing, meeting new people, and a lot of fun! Basic mountaineering experience and gear is required. To register (and for more information) contact Melinda Straight by May 31 to confirm your spot. This is a self-guided camp for club members.

Dates: August 13 - 20, 2005

Cost: Approximately \$450 (depending on helicopter costs in 2005). Includes hut fees, helicopter in and out.

Contact: Melinda Straight. 604-980-9921 or mjstraight@telus.net

Deadline: May 31, 2005

The 3rd ACC Watercolour Painting En Plein Air Workshop with Velvet Bailes

A special 3 day workshop to explore the watercolour medium and enjoy the fall colours of the Mount Baker ski area; all skill levels welcome.

Dates: Sept 24-26, 2005 (Tentative)

Participants: 8 to 12 max

Cost: To be confirmed... approximately \$230; fee includes professional instruction, meals and accommodation at the Mountaineers' Baker Lodge.

Contact: Liz Scremin at 604-921-2651 or liz@pensiamo.com

Fourth Annual ACC Lake Lovely Water Photo Workshop

A three day workshop to immerse yourself in outdoor photography.

Topics include: light control, composition, shooting infrared film, abstracts, equipment, night shooting, macro, portraits.

There are about 24 hours of instruction, practice and a critique after the weekend.

See the slide show on the section's web site.

Dates: September 9-11, 2005

Cost: \$495.00 for ACC members, \$550.00 for non-members. Includes hut fees and helicopter in and out. Does not include food or transportation to Squamish.

Contact: Doug Williams at 604-736-5799 or dwphoto@shaw.ca.

Alpine Club Trip Schedule

Date	Trip Description	Grade	Name	Phone
May 14-15	Ski/ Climb	B/C3	Gary Shorthouse	604-789-9913
May 14	Hike/ Snowshoe	B2	Susan Higginbottom	604-925-3742
May 15	Bike/ Hike	C2/3	Ian McGillivray	604-988-3618
May 21-23	Skaha Rock	B5	Rob Brusse	604-224-0747
May 24	Monthly Meeting @ Van Dusen			
May 29	Hike	B2/3	Melinda Straight	604-980-9921
Jun 11	North Twin Sister	B4	Rob Brusse	604-224-0747
Jun 11	Mt. Baker Area Summer Workshop	B3	Paul Baker	604-929-7699
Jul 1-9	Rogers Pass Camp	C4	Rob Brusse	604-224-0747
Jul 9-17	Lake Lovely Water Summer Camp	C5	Peter Woodsworth	604-254-7076
Aug 13-20	Tantalus Range Climbing Camp (Lake Lovely Water)	C4/5	Melinda Straight	604-980-9921
Sept 9-11	Fourth Annual Lake Lovely Water Photo Workshop	A2	Doug Williams	604-736-5799

We Need More Trips!

To add your trip to the summer schedule please contact Mike Thompson at 604-534-8863 or thompson_foundry@telus.net or Ian McGillivray at 604-988-3618

The Alpine Club Of Canada

Vancouver Section Trip Schedule Spring/Summer 2005

GRADING GUIDELINES

- A - Less than 6 hrs travel/day (Not strenuous)
- B - 6 to 8 hrs travel/day (Moderately strenuous)
- C - 8 to 12 hrs travel/day (Strenuous)
- D - More than 12 hrs travel/day (Extremely strenuous)
- S - Slower-paced trip, (Suitable for seniors)

- 1 - Gentle slopes. Travel on trails over fairly level terrain.
- 2 - Moderate slopes. Travel may be off trail. Intermediate skiing ability recommended. Easy climbing.
- 3 - Travel in mountainous terrain. Steep forest and glaciers probable. Back country equipment and intermediate skiing experience required. Moderate climbing.
- 4 - Travel over difficult mountain terrain. Advanced back country and mountaineering experience, ability and equipment required. Advanced ski mountaineering or moderate to difficult ice or mixed climbing. Ropes and belays required.
- 5 - Technical ice or mixed climbing. Advanced climbing experience required.

Please contact trip organizers by the Wednesday prior to the trip or earlier to express your interest. Non-members are welcome to participate once or twice before joining, and are accepted on a space available basis.. Everyone is welcome to attend our meetings at 7:30 p.m. in the Floral Hall of Van Dusen Botanical Gardens, W. 37th Ave. & Oak St. in Vancouver on the fourth Tuesday of every month (except July, Aug., Dec.).

Trip organizers are required to have participants sign the ACC waiver which can be obtained from the climbing schedule organizer, or from: www.alpineclubofcanada.ca/vancouver.

Completed waivers can be mailed to: Alpine Club of Canada, Vancouver Section, c/o The Federation of Mountain Clubs of B.C., 47 West Broadway, Vancouver, B.C. V5Y 1P1, or given to any member of the executive.

CHAIRPERSON
Tony Knight 604-873-2276
MEMBERSHIP
vacant
CLIMBING SCHEDULE
Ian McGillivray 604-988-3618
Mike Thompson 604-534-8863
vanacctrips@hotmail.com



Return undeliverable Canadian address to:
The Alpine Club of Canada, Vancouver Section,
c/o Federation of Mountain Clubs of BC
P.O. Box 19673, Vancouver, BC V5T 4E3

